



DETAILS:

Size:

14' L x 7'6" W x 3.2" |
4.27 L m x 2.29 W m x 0.08 m

Weight:

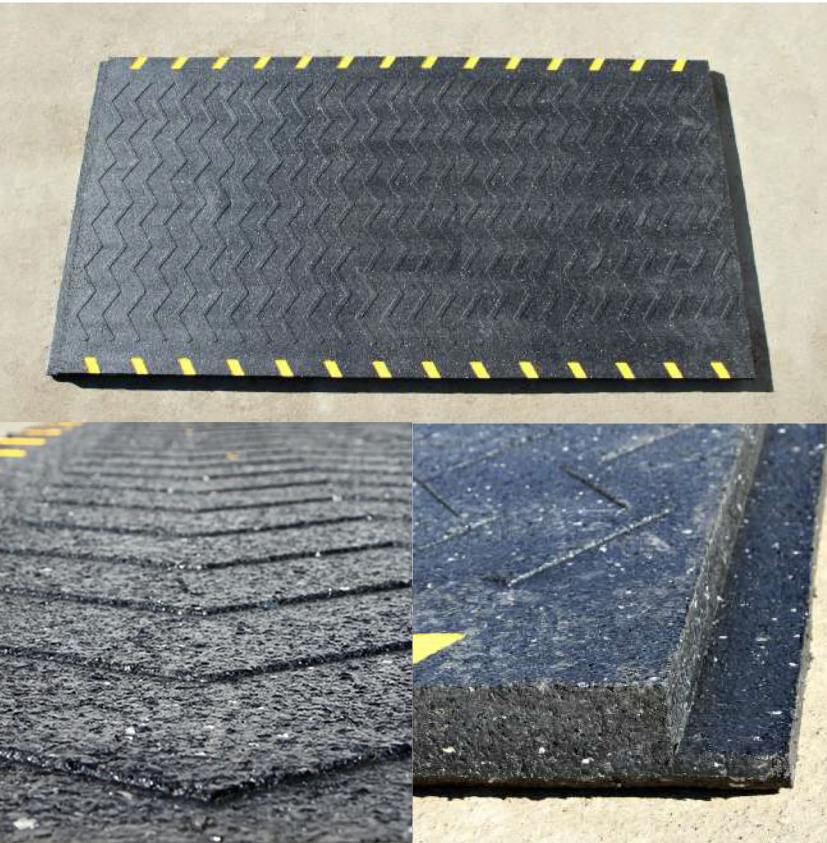
1850 lbs [+/- 50 lbs] |
839 kg [+/- 23 kg]

Applications:

Industrial walkways, Road crossings and more

Shipping:

FOB Manufacturer



ADVANTAGES:

- **Permanent** and **portable** and offer the durability required to withstand constant pedestrian and vehicular traffic.
- Painted **yellow chevrons** on edges to promote visibility and safety.
- **Flexible** and will not crack or separate from frost heaves like concrete.
- **All season**, all weather durability including snow plowing and de-icing.
- Safe, **anti-slip** surface can reduce liability claims.
- Unique over/underlap design to help **prevent weed growth** while also reinforcing proper installation.
- **Made from recycled rubber tires**, the structures resist corrosion and can handle great loads.

